

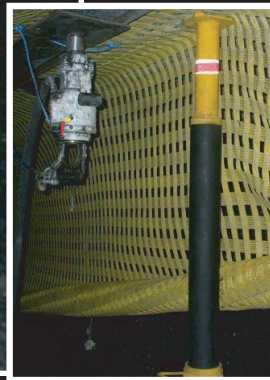
IN TOUGH CONDITIONS GET IT UP THERE!

With a **FIREFLY INTERNATIONAL**
MESH MUNCHER



**HIRE
BUY**

Your choice



- Primarily used for lifting and supporting lightweight mesh into place while bolting operations are performed.
- Constructed of Laminated Fibreglass.
- Lightweight design.
- Extension adaptors available to suit different seam heights.



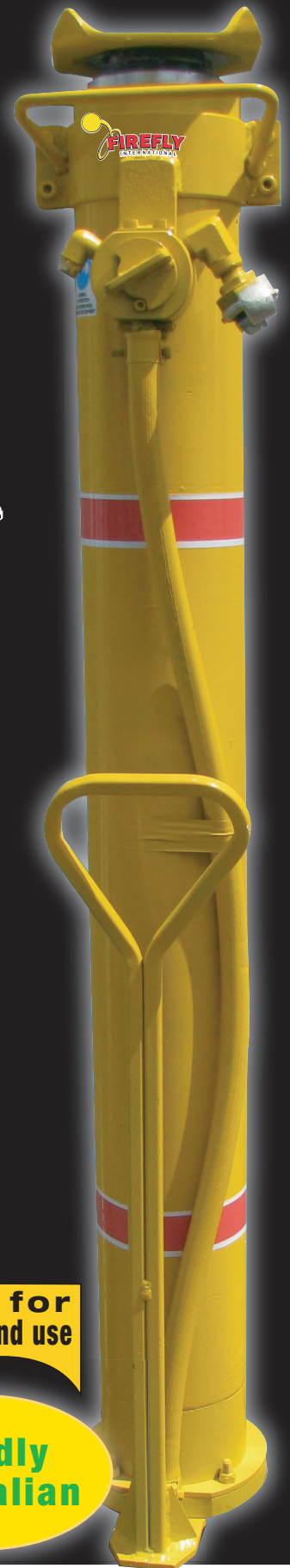
**Precision
Engineered
Control
Valve**



**Robust
Spike
Positions
Securely**

**Made for
underground use**

**Proudly
Australian**



**FIREFLY
INTERNATIONAL**

**25 Thrift Close
MOUNT THORLEY
NSW 2330
P. (02) 6574 6500
F. (02) 6574 6569**

sales@fireflyint.com.au
www.fireflyint.com.au

Specifications

Leg Size	1100
Stroke	1887
Closed Height	1148
Ext Height	3035

300mm Extension also Available